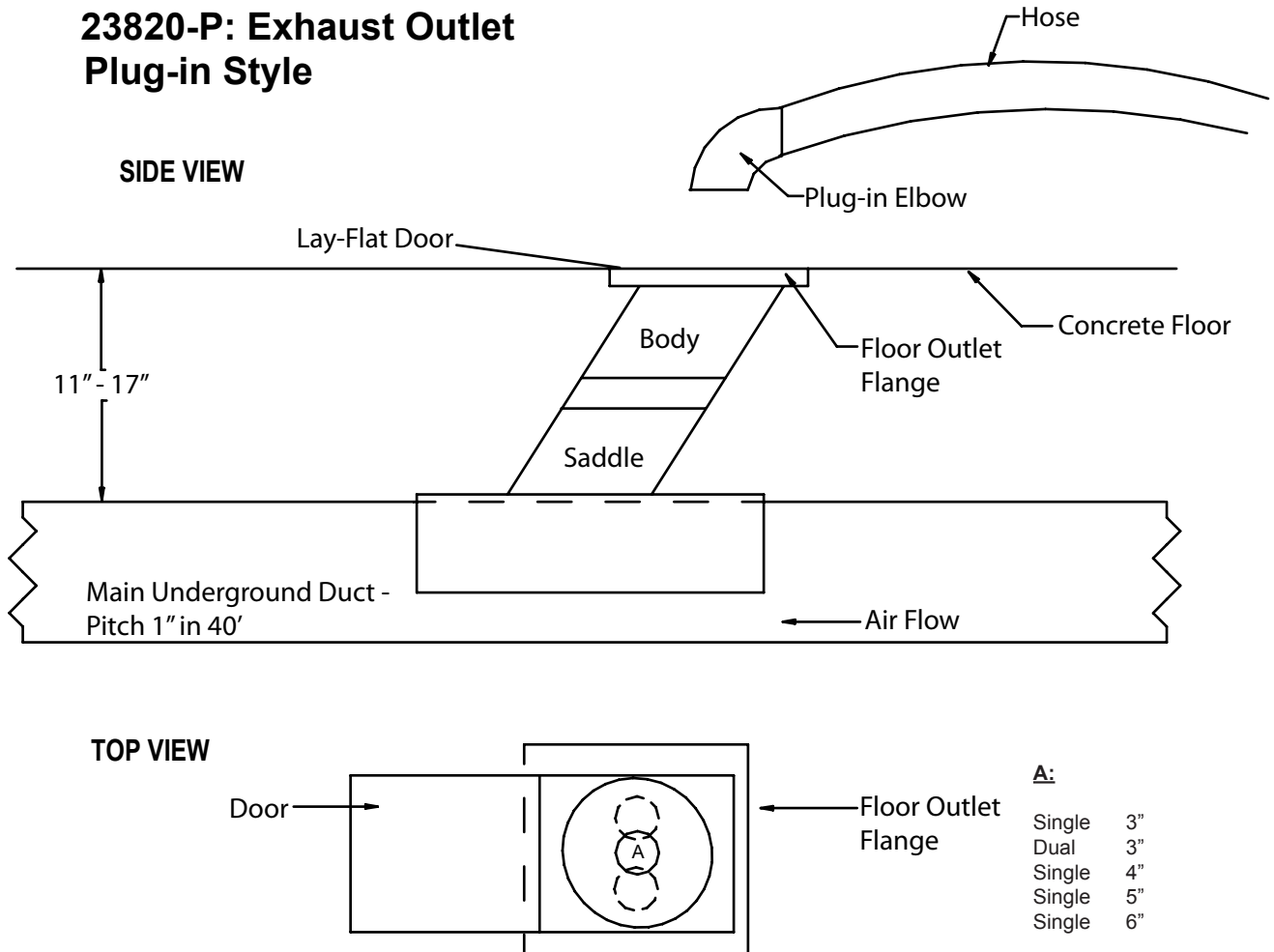


**MODEL 23820-P (Plug-in Non-Self Storing) - FOR 3" SINGLE/DUAL PLUG-IN, FOR 4" PLUG-IN, FOR 5" PLUG-IN, FOR 6" PLUG-IN.**

**23820-P: Exhaust Outlet  
 Plug-in Style**



Lay-flat door is opened, exposing the inner plate that will have one of the combinations denoted by "A" in the top view (above).

The hose/plug-in elbow is inserted into the "A" opening, which completes the connection from the floor outlet to the vehicle.

(Hose, typically, is stored on a wall structure or column within the building.)

**NOTE:** Above system is used when underground duct pipe is PVC coated spiral pipe.