

**SERIES - 11000-FMB**

D-series Blower  
TFC motor - UL - CSA  
Inlet transition to hose  
is included. Fan  
discharge: Front, side  
and rear

Safety Cable

Hanging Chain  
W/swivel  
mounting hook

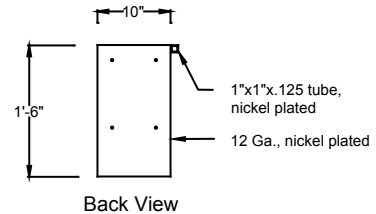
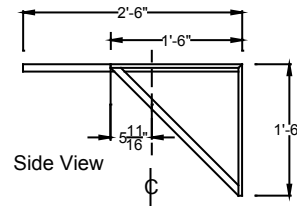
Balancer

Lifting elbow

Hose clamp

Flexible fume hose  
Silicone Nomex (series 4000)  
Or  
Impregnated polyester w/ fully  
enclosed helix (series 5000)

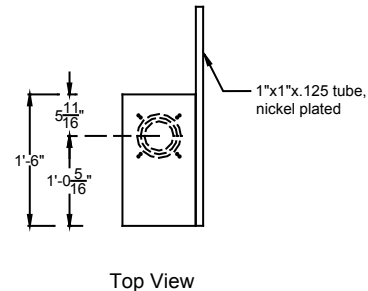
Nozzle



HOLE PATTERN FOR:  
Large fan housing mount  
Small fan housing mount

HOLE CUT-OUT FOR:

4" round  
5" round  
6" round



**NOTE:** 11000-FMB System is supplied with a Mounting Bracket (as shown) and Fan. See D Series Blower catalog pages for fan selection. 4000/5000 Series hose standard (other hoses available by request). Hose is supplied in following diameters: 4", 5", and 6" Hose is supplied in following lengths: 16', 20', and 24'

NOTE: Fan HP for hose diameter follows:	4" Diameter Hose	0.5 HP Fan, D05, 1 PH standard
	5" Diameter Hose	1.0 HP Fan, D10, 1 PH standard
	6" Diameter Hose	1.5 HP Fan, D15, 1 PH standard