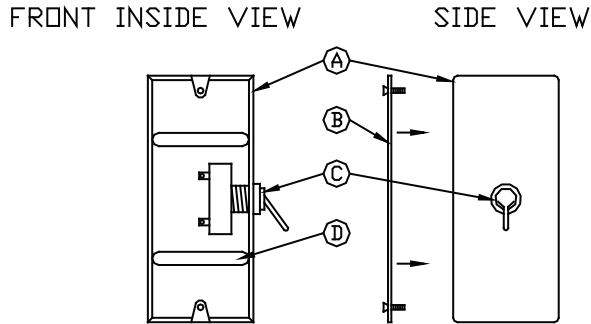
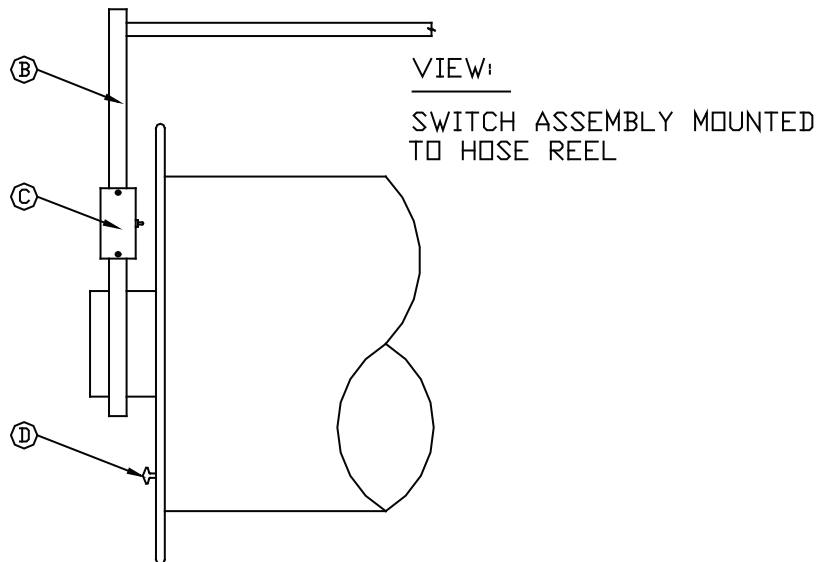


ON/OFF DMSHR SWITCH IS AN OPTION



ON/OFF DMSHR SWITCH ASSEMBLY MODEL # DMSHR



A. Sealed Mounting Box  
D. (2) Slot Cuts for Adjustment  
of Box Depth  
G. Buffer Pad for Activating  
the On/Off Toggle

B. Box Cover Plate  
E. H-Reel Support  
Mounting Frame

C. On/Off Toggle Switch  
F. On/Off Switch Control Assembly