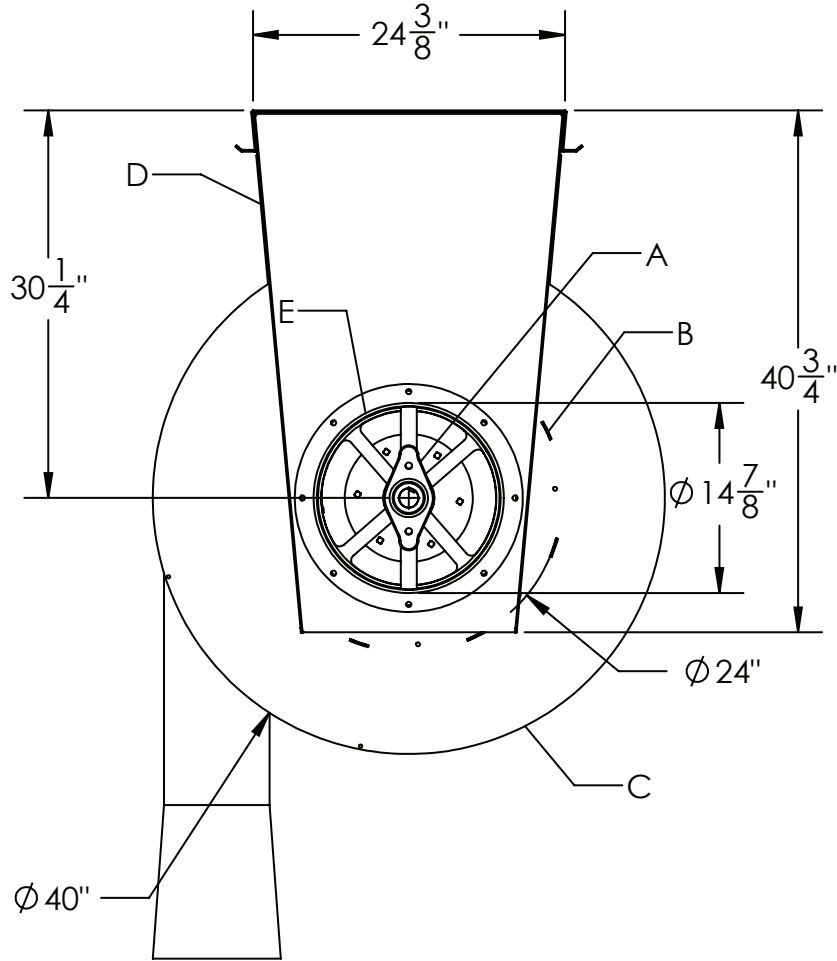


**XL Series Hose Reels - Oversized • 24" Drum SIDE VIEW for Models XL-24-3, XL-24-5, XL-24-7**



**NOTES:**

- Operator - Standard: 1/2 HP 115/230/1 or  
Optional: 1/2 HP 230/460/3 Chain Driven ODP Motor Assembly  
2-button Up/Down Switch, and Internal Automatic Reset Thermal  
Overload
- Optional: Explosion Proof Motor Drive with Push Button  
Control
- Hose Reel shall be powder-coated Red (optional  
Stainless Steel Construction)
- Contact Factory for Flex Hose Options

**XL- 24 MONOXIVENT  
ID/DESCRIPTION**

- A. Inlet Drum Bearing  
Spark Free Operation Available  
With Optional Bearings
- B. 16-Gauge Drum
- C. 12-Gauge Drum Ends
- D. 10-Gauge End Frame
- E. Duct Connection Collar