



Application Spotlight

NORFI Rail Installed at Stadium in Baltimore

Application Spotlight Location:

M&T Bank Stadium

Baltimore, MD

Monoxivent Sales Rep:

Ward-Boland Associates

Ted Sadowski

Details:

NORFI Rail, by Monoxivent, with
Exhausting Hose System



Summary:

Monoxivent partnered with Ward-Boland Associates to provide a NORFI Rail source capture system at the M&T Bank Stadium garage. The system eliminates toxic diesel fumes from the workplace environment.

The system includes two ALU-150 Aluminum Extraction Rails with rubber seals and trolleys. The hose drop assembly includes six 11000 Series Hose Drops with high temperature 4000 Series Hose and 8000 Series Spring Clamp adapters.





NORFI Systems, with Simple Drops, are one of the most versatile indoor source capture solutions on the market today. The Systems are provided with two models: the ALU Rail and Technorail. The Technorail models easily handle smaller air volumes and lighter weight equipment and accessories, while the ALU models are geared for higher air volumes and larger equipment.

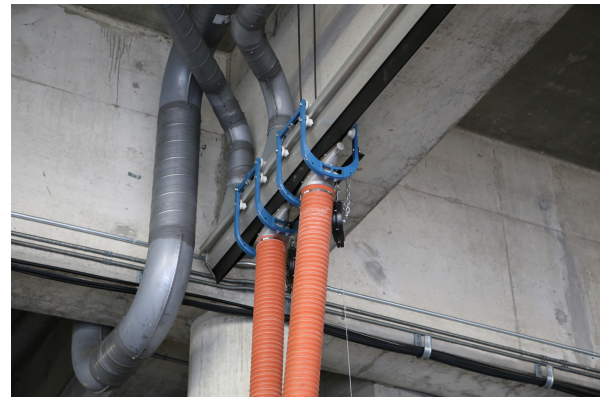


The Systems are available for use with Monoxivent's RTS (Retractable Telescopic System) or Simple Drops with Balancers.

Simple Drop –

Overhead System Overview:

Monoxivent simple drops and overhead systems are a user-friendly and cost effective solution that meets a wide variety of demands. These systems incorporate many hose types and lifting configurations. The hose types range from high-temperature silicone to medium temperature polyester.



ALU Rail Product Overview: Aluminium extraction rail with sealing lips and mounting profiles to carry moveable extraction trolleys. The extraction rail can be used with arms, hose reels and fully flexible hose systems.



The ALU modular concept caters for a wide range of applications and workplace environments. Straight-forward assembly, robust design with low pressure losses. Specification includes all necessary seals, clips and brackets.

About M&T Bank Stadium:

M&T Bank Stadium is a multi-purpose football stadium located in Baltimore, MD. It is the home of the Baltimore Ravens of the National Football League. Often referred to as “The Bank”, M&T Bank Stadium officially opened in 1998, and is currently one of the most praised stadiums in the NFL for fan amenities, ease of access, concessions and other facilities. The stadium was originally known as Ravens Stadium at Camden Yards, until ISP PSINet acquired the naming rights in 1999, naming it PSINet Stadium. It then reverted to Ravens Stadium in 2002 when PSINet filed for bankruptcy. Served by the Baltimore Light Rail, the stadium originally featured a natural grass surface. However, an artificial surface, Sportexe Momentum Turf, was installed for the 2003 season, which in turn was replaced by a new-generation Sportexe Momentum 51 in 2010. The listed capacity for M&T Bank Stadium is 71,008. (Wikipedia)

