

# MONOXIVENT®

Source Capture Systems

## Operation and Maintenance Manual

### Aluminum-Rail Channels ALU 150/250



MORE THAN A CLEAN SOLUTION



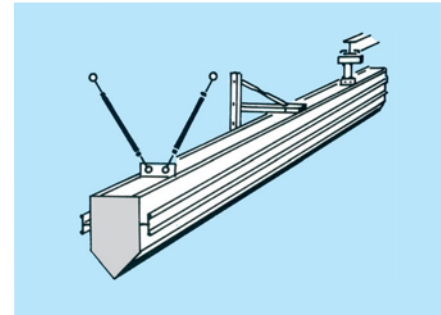
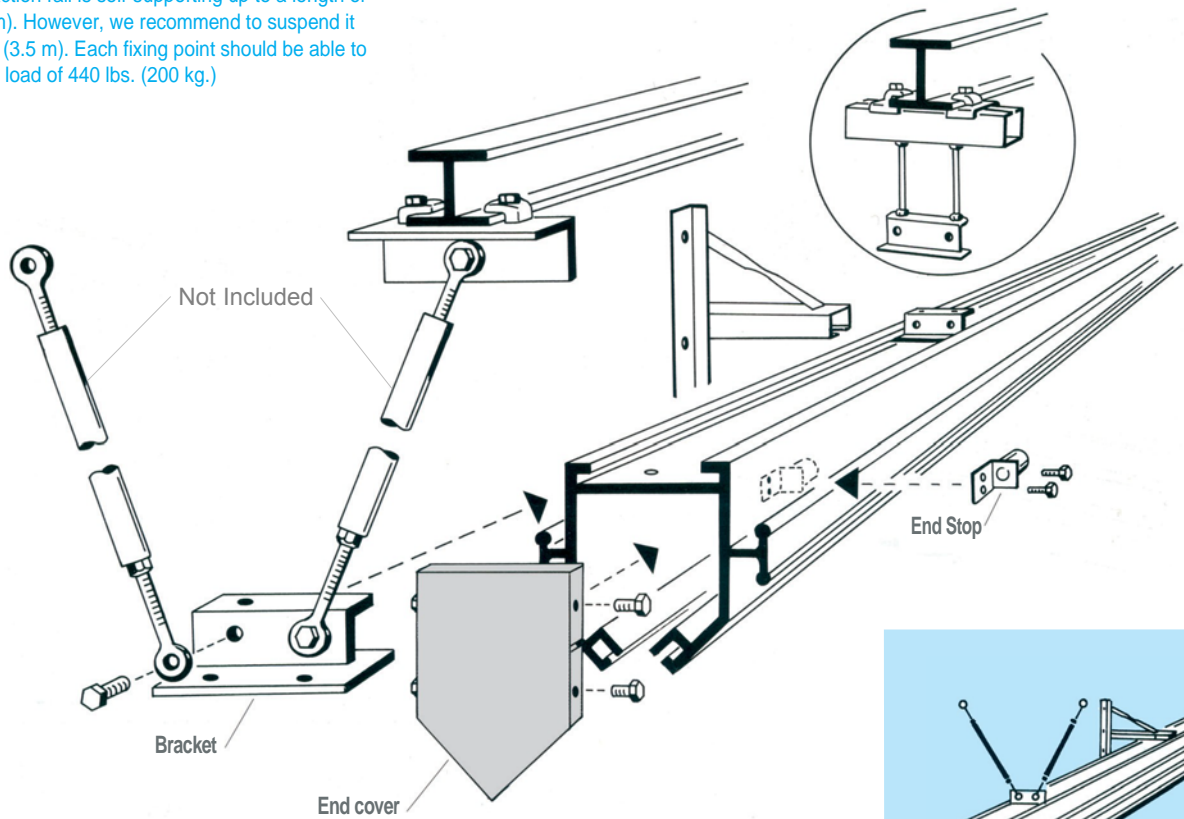
**MONOXIVENT - SOURCE CAPTURE SYSTEMS**

1306 Mill St., Rock Island, IL 61201  
877-608-4383 - [info@monoxivent.com](mailto:info@monoxivent.com)  
[monoxivent.com](http://monoxivent.com)

1

## Suspension of the slotted suction

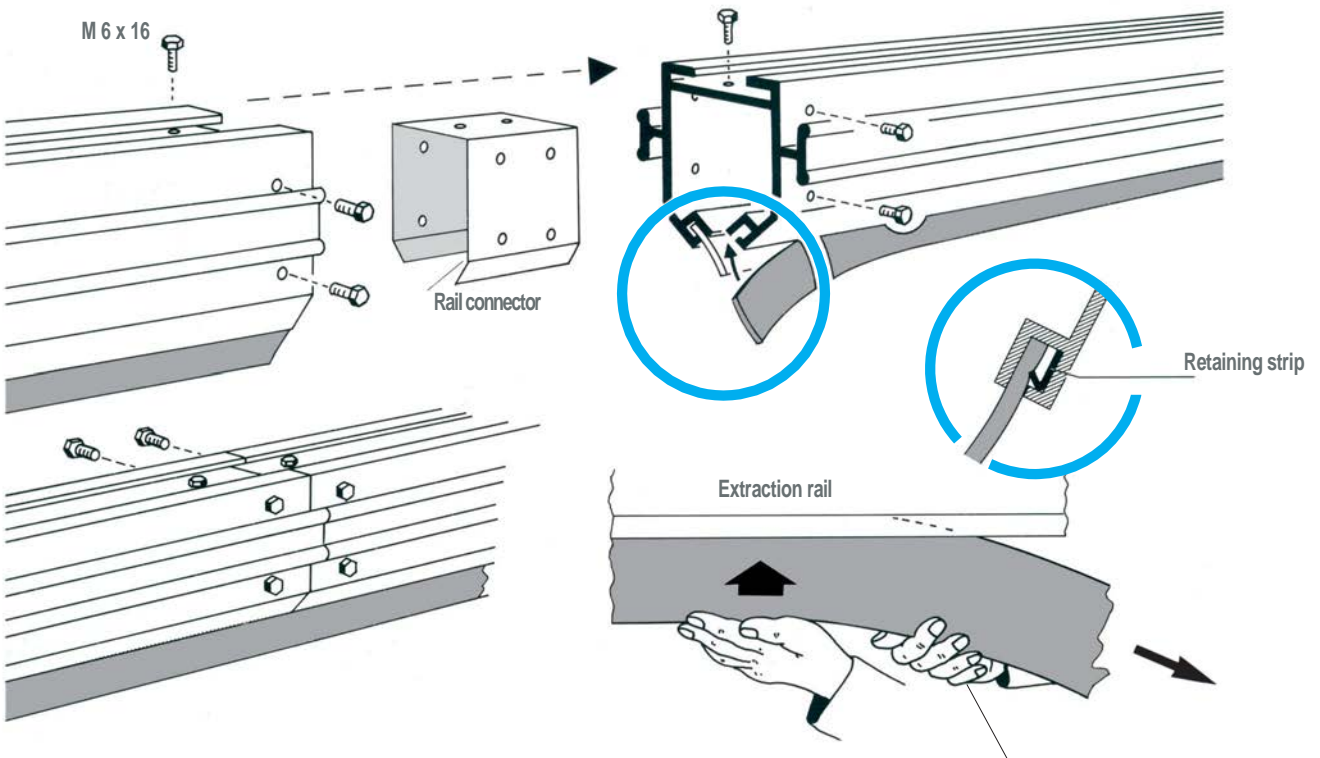
The extraction rail is self-supporting up to a length of 19'8" (6 m). However, we recommend to suspend it every 11' (3.5 m). Each fixing point should be able to support a load of 440 lbs. (200 kg.)



2

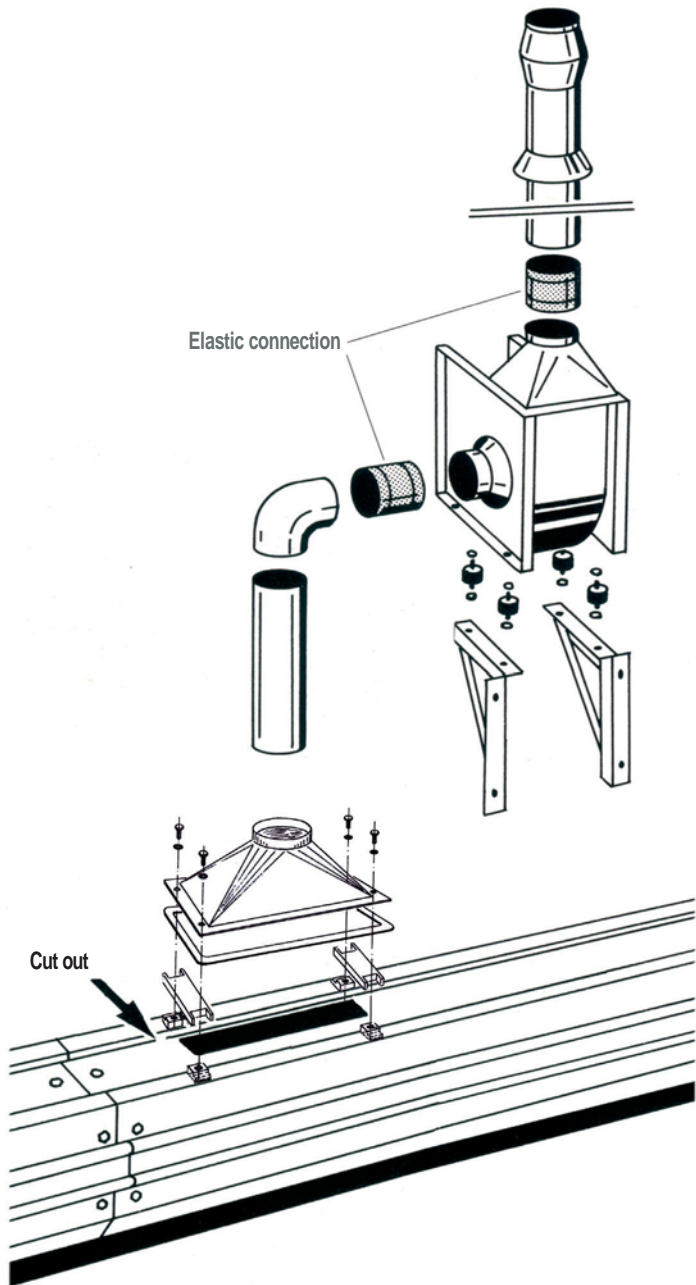
## Connection of rail segments And installation of sealing lip

**Please note:**  
The sealing lip is supplied in a coil. The side of the lip that faces the inside of the coil should be installed facing the inside of the extraction rail.



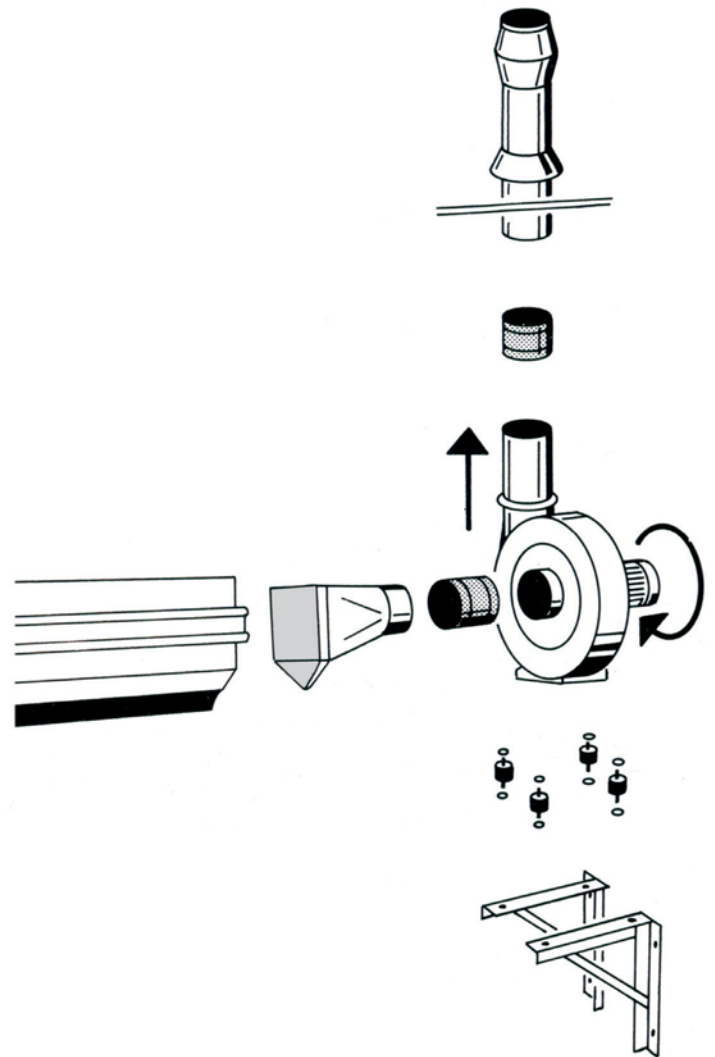
3a

### Connection of ventilation duct to the extraction rail

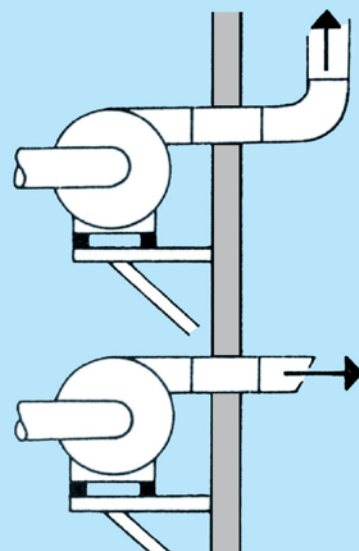
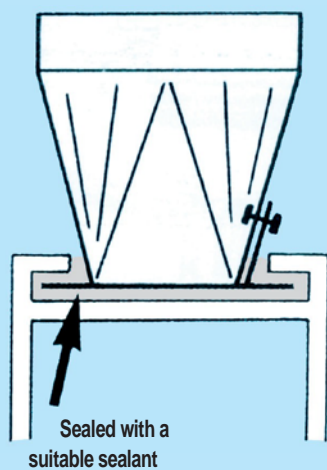


3b

### Alternative: Ventilation connection at the front of the rail

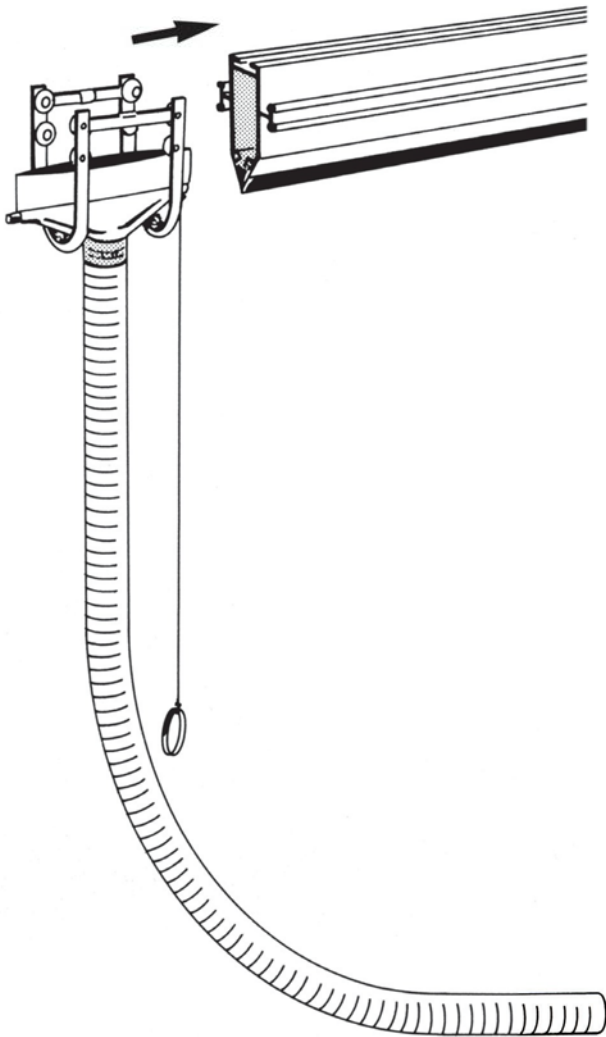


**Please Note:** After completing the electrical installation the fan should be checked for correct rotation.

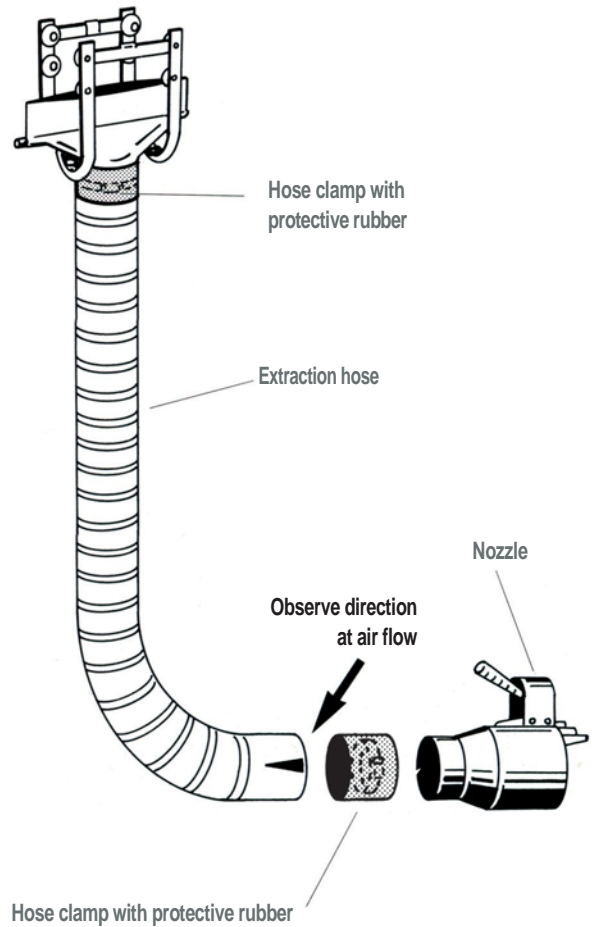


4<sup>a</sup>

## Introduction of the trolley into extraction rail

4<sup>b</sup>

## Extraction Trolley

4<sup>c</sup>

## Balancer for hose lift

### Setting the retraction force

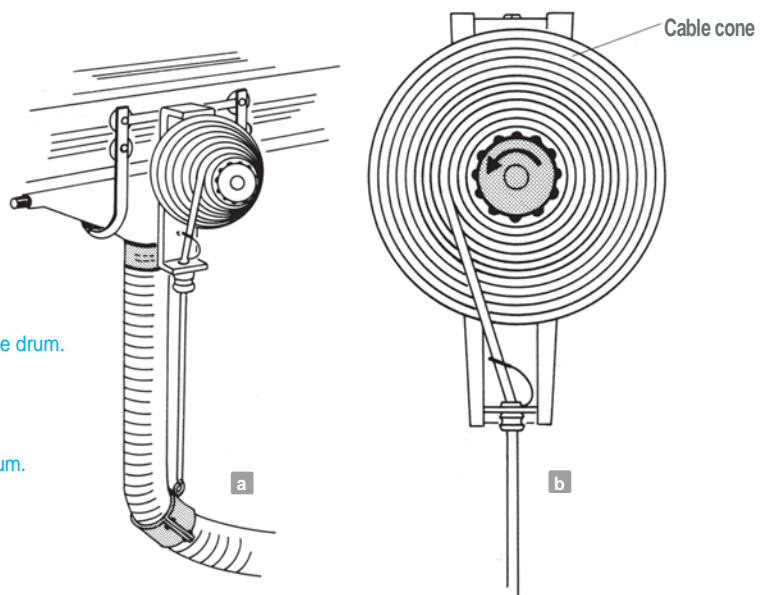
It is important to make sure that a sufficient length of cord is available. This length can be adjusted by coiling or uncoiling the cord from the balancer drum. Adjust the cord stop and hose position (check function).

### Increase retraction force

- a Pull out the cord approx. 2 m
- b Block the balancer drum and manually wind 2-5 coils of cord onto the drum.

### Reduce spring force

- a Pull out the cord a short distance.
- b Block the balancer drum and remove 1-2 coils manually from the drum.



# NORFI

1306 Mill St.  
Rock Island, IL 61201  
309-794-1000